

HTV  ONT



HTVRONT D2 DTF Printer

User Manual

Thank you for purchasing the HTVRONT D2 DTF Printer. Before using this product for the first time, please read this product manual carefully and keep it for future reference.

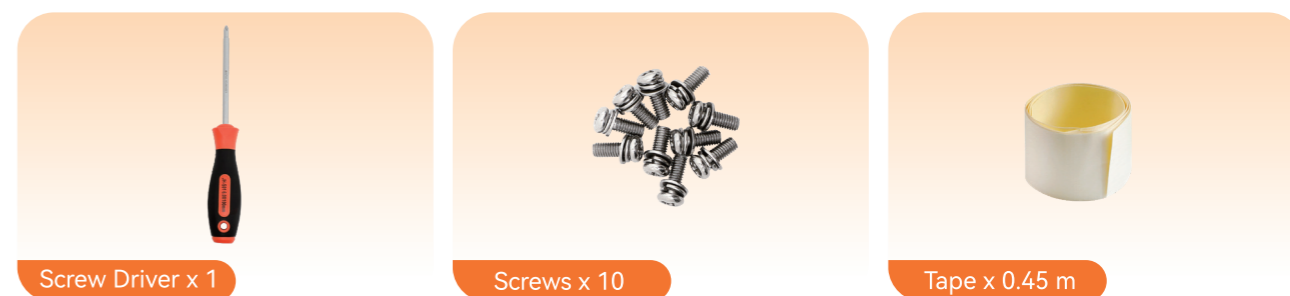
Important Notice: Please keep the original packaging (including the carton and foam inserts) for future storage or transportation.

Included in the Box

Machine Package List



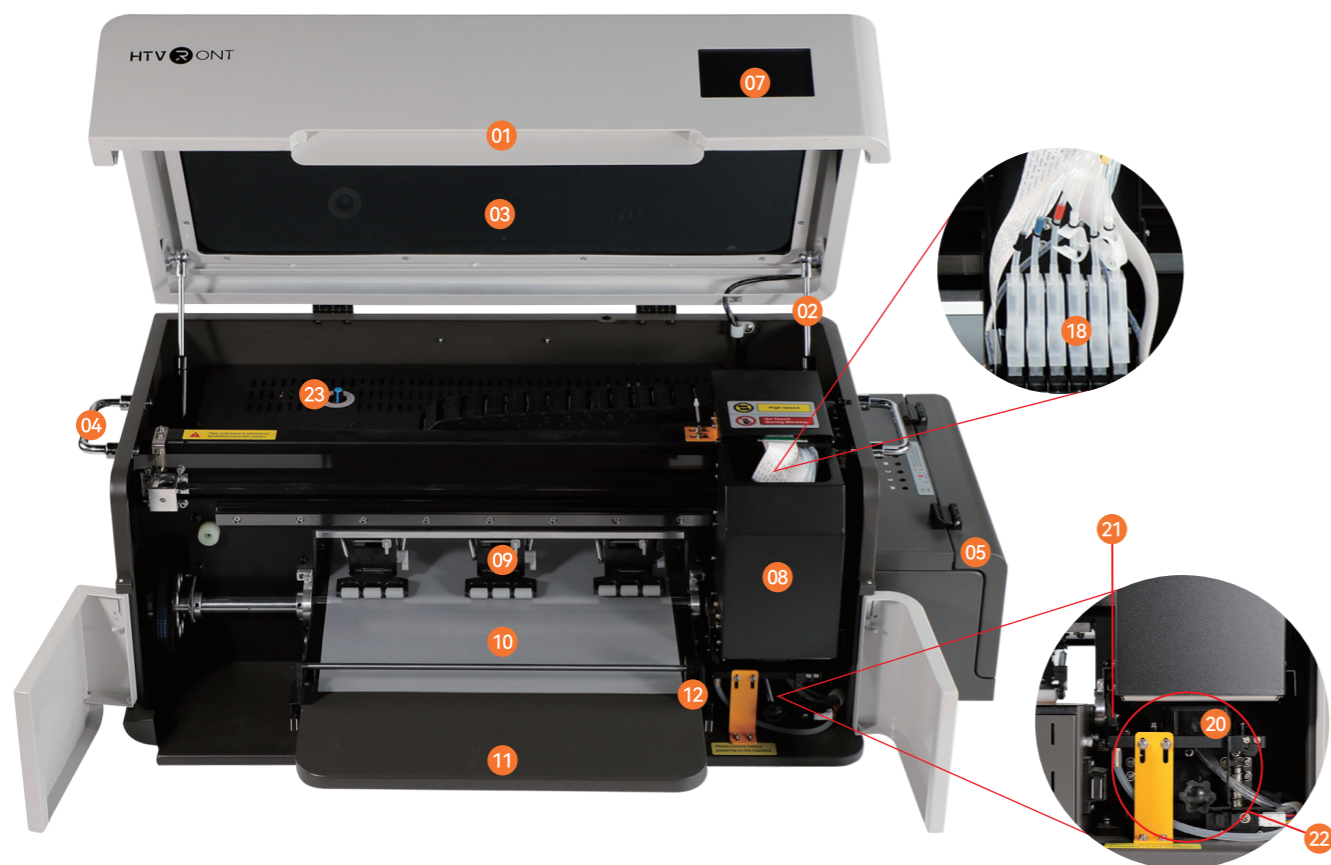
Tools & Accessories Box



For Replacement



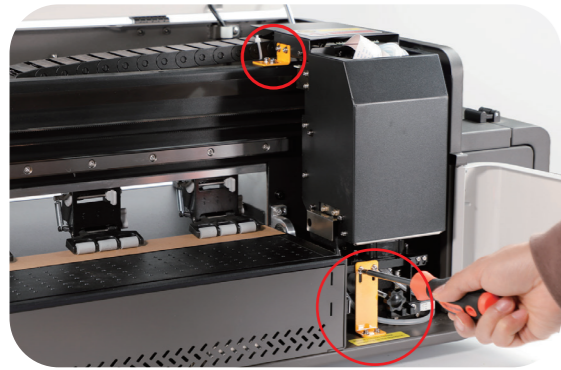
Machine Overview



1. Lid	10. Output Platform	19. White Ink Buffer
2. Pneumatic Lid Supporter	11. Film Tray	20. Ink Pad
3. Viewing Window	12. Film Cutter	21. Ink Scraper
4. Handle	13. Power Switch	22. Ink Stack
5. Ink Tank	14. Power Port	23. White Ink Speed Knob
6. Ink Bottle	15. Maintenance Doors	24. Auto Ink-circulation Panel
7. Touchscreen Control Panel	16. Waste Ink Bottle	25. Auto Printhead Cleaning Panel
8. Printhead	17. Ink Tube	26. Print Port
9. Pressure Roller	18. Ink Sac	



Machine Assembly



01 Unscrew the Fixed Plate

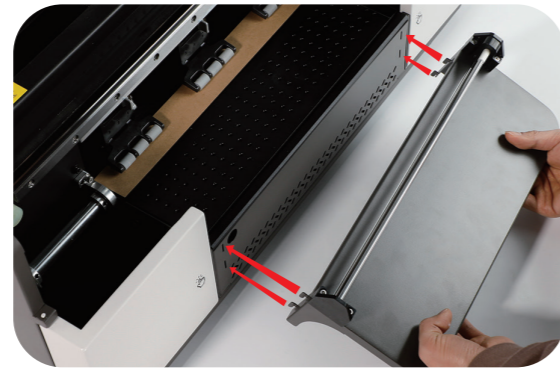
Open the printer lid and the right-side access door. Use a screwdriver to remove all screws securing the 2 yellow fixed plates, then take the plates out of the printer.

03 Install Film Accessories



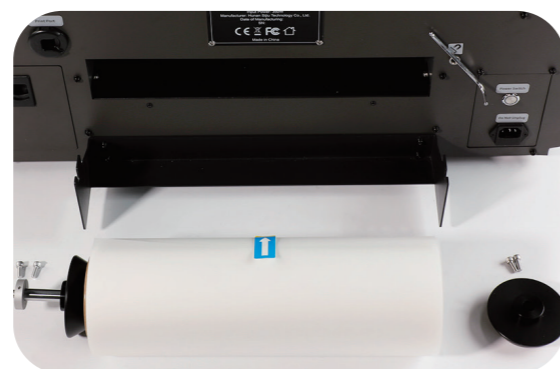
3.1

Remove the four pre-installed screws at the rear of the printer. Align the film holder with the mounting holes, then reinstall and tighten the screws to secure it.



02 Install the Film Tray

Position the film tray at the front of the printer. Insert the 4 tray hooks into the mounting holes, then press down gently until the tray locks into place. Once installed, remove the tape fixing the film cutter.



3.2

Slide the roller bar through one plastic holder, making sure the set-screw side faces outward. Then feed the roller bar through the DTF transfer film, and then install the plastic holder on the opposite side.

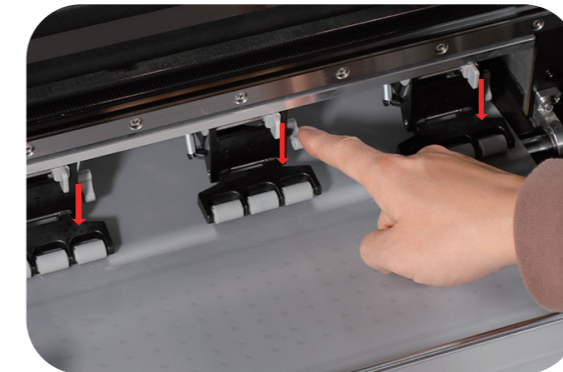
Note: Make sure the film orientation is correct before proceeding.

3.3

Place the roller bar into the slots on the film holder. Use the Allen wrench to tighten the set screws on both plastic holders to lock the film in position.

3.4

Guide the film into the feed path from the rear of the printer. Lift the pressure rollers, remove the protective backing paper, and manually advance the film forward until the film reaches the reference lines on the film tray. Then lower the pressure rollers to secure it.



3.5

Open the ink tank cover, shake the ink bottle thoroughly, and pour the ink into the corresponding ink bottle.

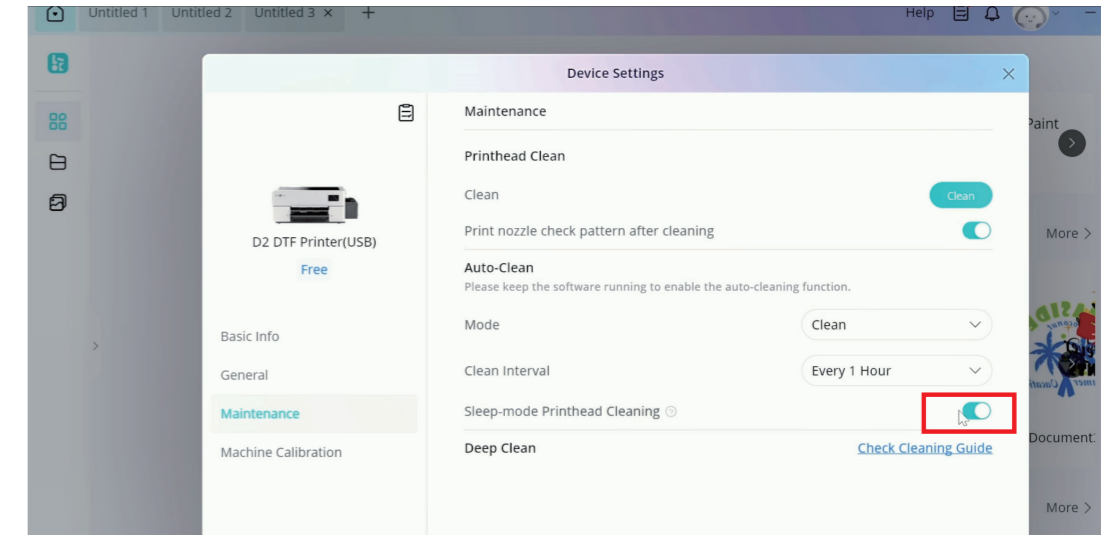


Control Panel Instructions

● Touchscreen Control Panel Functions

Icon	Name	Functions	Note
Online	Online	The printer is successfully connected to the computer.	If connection fails, turn off the printer. Open the software and connect the USB cable first, then power on the printer.
Offline	Offline	The printer is not connected to the computer.	
Free	Free	The printhead is idle and ready to receive commands.	Keep away from the printhead to avoid contact. Wait until the screen shows "Free" before sending other commands.
Print	Print	The printer is printing.	Wait until cleaning is complete and the screen shows "Free" before sending other commands.

Icon	Name	Functions	Note
	Clean	The printer is cleaning the printhead.	Wait until cleaning is complete and the screen shows "Free" before sending other commands.
	Left	Move the printhead to the left.	Press and hold. Use only when status is "Free".
	Right	Move the printhead to the right.	Press and hold. Use only when status is "Free".
	Home(X)	Return the printhead to the home position.	Use only when status is "Free".
	Feed	Feed the DTF transfer film forward.	Use only when status is "Free".
	Back	Move the DTF film backward.	Use only when status is "Free". Avoid moving the film back inside the pressure rollers.
	Stop	Stop the current print job and return the printhead to the home position.	Only works during printing status.
	Clean	Starts automatic printhead cleaning.	Recommended to use when status is "Free"
	Pause	Pauses the current print job immediately. Press again to resume printing.	Only works during printing status.
	Check	Prints a nozzle check pattern.	Recommended to use when status is "Free".



1. White ink circulation
2. Regular cleaning: This function will take effect only after "Sleep-mode Printhead Cleaning" is enabled in IdeaStudio.

Note: When either function is running, the "ON" indicator at the upper-left corner of the panel will light up. This function helps prevent ink tube and printhead clogging and extends the service life of the printer.

02 Panel Display

Green digits: Running duration (PV)

Red digits: Time interval between operations (SV)



03 Set Running time (PV) & Interval (SV)

The white ink circulation and the automatic printhead cleaning operate using the same setup logic.

Step 1: Double-press "SET" to enter running time (PV) setting. Use "▲" or "▼" to adjust the value.

Step 2: Press "SET" once again to enter the interval time (SV) setting. Use "▲" or "▼" to adjust the value.



04 Set Time Unit

Step 1: Press and hold "SET" for 6 seconds to enter parameter mode.

Step 2: Use "▲" or "▼" to adjust the parameter value.

Step 3: Press "SET" to switch between parameters.



Ink Circulation & Printhead Clean Control Panels Instructions

01

Press the "Power Switch" and the power button indicator turns off, the printer enters sleep-care mode, and the two side control panel lights up. Keep the printer powered on. In this mode, the printer automatically performs the following functions based on the default time settings:



Parameter Description

Parameter	0	1	2
P0 – Running Time Unit	Seconds	Minutes	Hours
P1 – Interval Time Unit	Seconds	Minutes	Hours
P2/P3/P4/P5	Factory default settings. Do not modify.		

05

Start / Pause Function

Double-press "▶/■" to switch between Run and Pause modes. When paused, the controller timer stops.



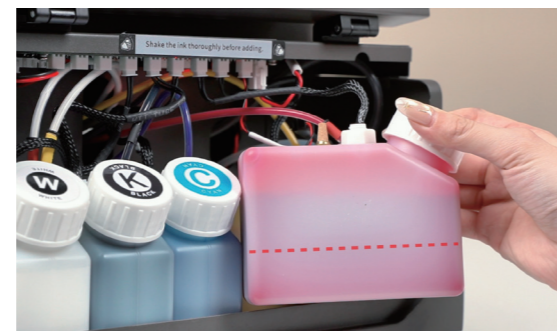
Low Ink & Waste Ink Alerts

The printer monitors both ink level and waste ink capacity to ensure stable printing performance.

01

Alert Trigger Conditions

- The printer will activate a warning sound under the following conditions:
- Ink Tank (W, K, C, M, Y):
- When the ink level drops below one-third of the tank capacity (approx. 100 ml)
- Waste Ink Tank (WB):
- When the waste ink level exceeds two-thirds of the tank capacity (approx. 200 ml)



02

Alert Behavior

- The printer will beep continuously for 60 seconds
- The alert will pause for 5 minutes
- The cycle will repeat until the issue is resolved



03

Required Action

- Refill the ink tank when the ink is low
- Empty the waste ink tank when it is full

04

Disable Alert Function (Optional)

If you need to disable the alert: Remove the ink tank cover and unplug the ink tank connection cable from the circuit board inside the cover.



Software Instruction - IdeaStudio

Before installing the software, make sure your computer meets the following system requirements:

01

System Requirements

- Operating System: Windows 10 or later
- Processor (CPU): Intel Core i5-8400U or higher
- Memory (RAM): 10 GB or more
- Available Disk Space: At least 2 GB
- Display Resolution: Recommended: 1920 × 1080; Minimum: 1440 × 900

02

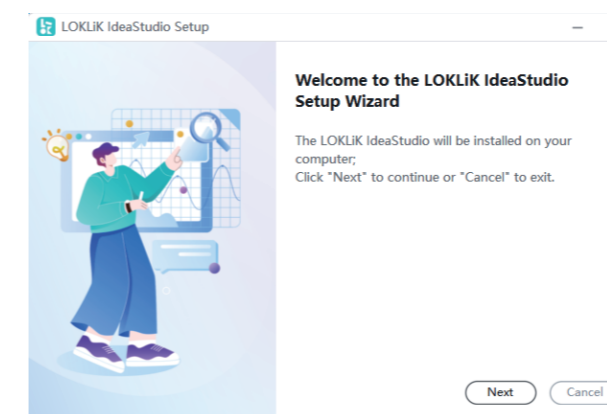
Software Download

Open a web browser on your computer. Enter the following URL in the address bar: <https://www.htvrnt.com/blogs/htvrnt-app-guide>. Download the IdeaStudio installation package.

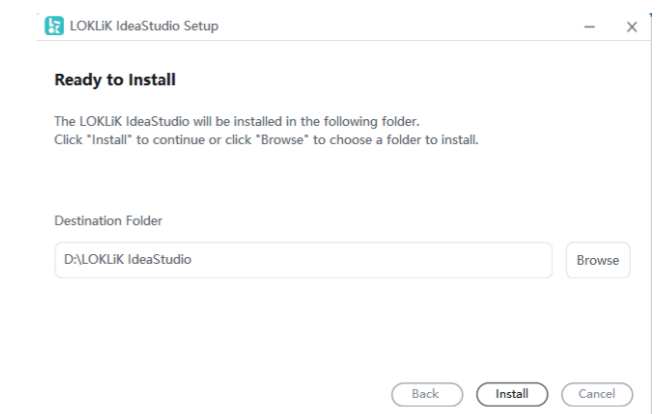
03

Software Installation

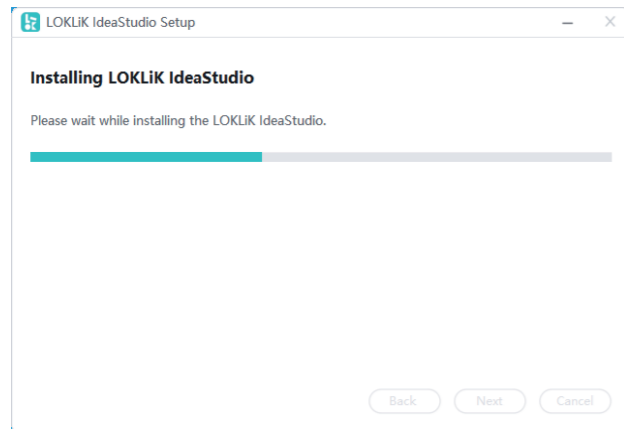
1. Open the IdeaStudio Setup Wizard.



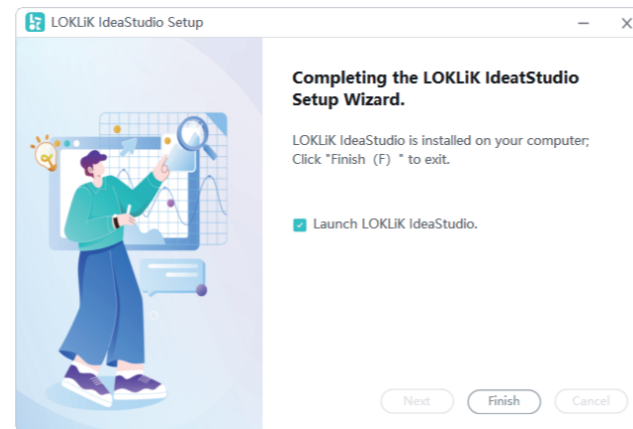
2. Select the destination folder and click "Install".



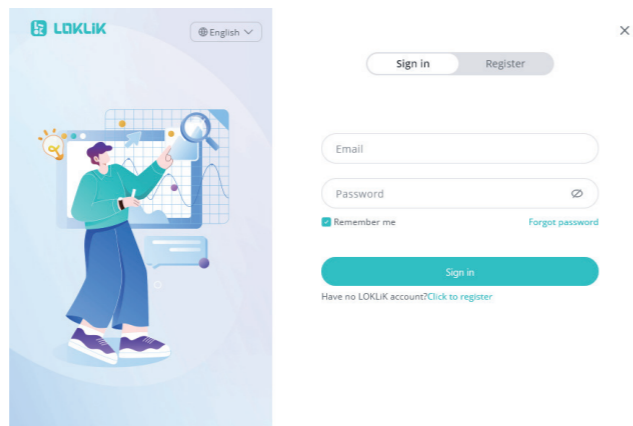
3. Wait while the software is installing.



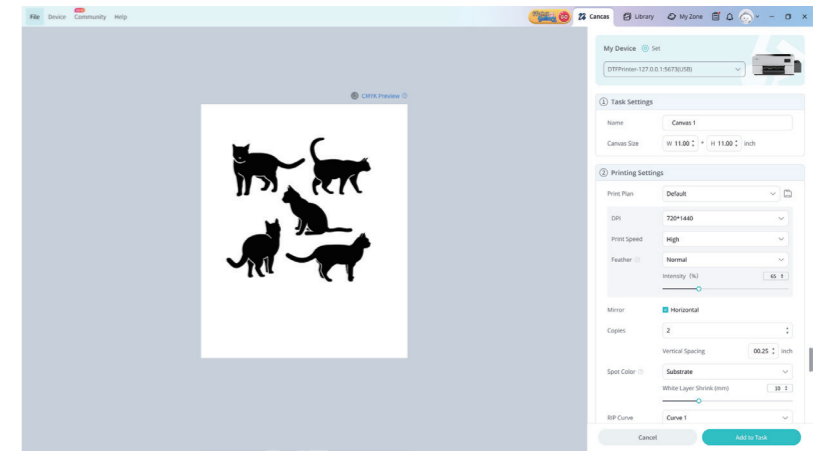
4. Click Finish to exit the Setup Wizard once installation is complete.



5. Launch the software and click "Register" to create an account and log in. If you already have an account, click "Log in" directly.

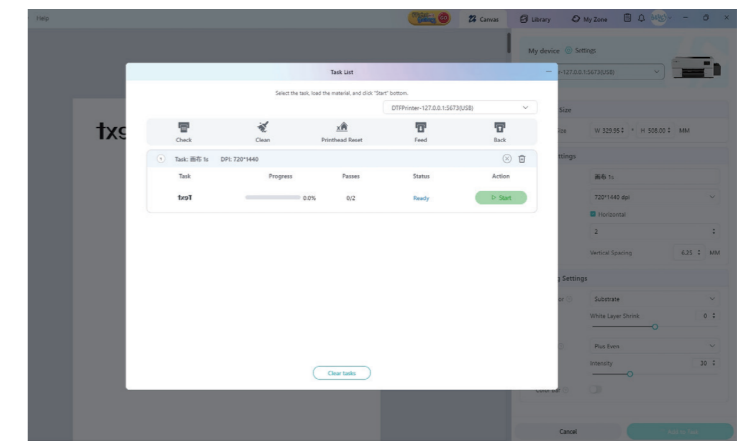


3. Parameter Setting Page: This page is used to adjust printing settings and is the core area for print configuration: "Printing Resolution - DPI", "Copies", "Spot Color", etc.



4. Task List: Monitor pending and active print jobs and provide machine control functions.

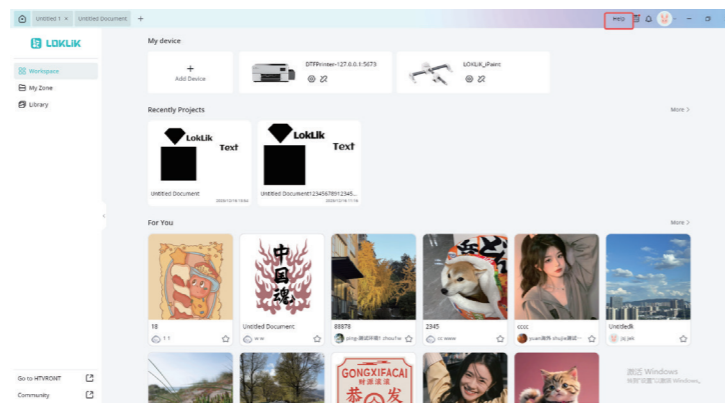
- Check:** Print a test pattern to check print-head condition.
- Clean:** Start automatic printhead cleaning to remove excess ink and maintain print quality.
- Printhead Reset:** Return the printhead to its initial position.
- Feed:** Move the DTF transfer film forward.
- Back:** Move the DTF transfer film backward.



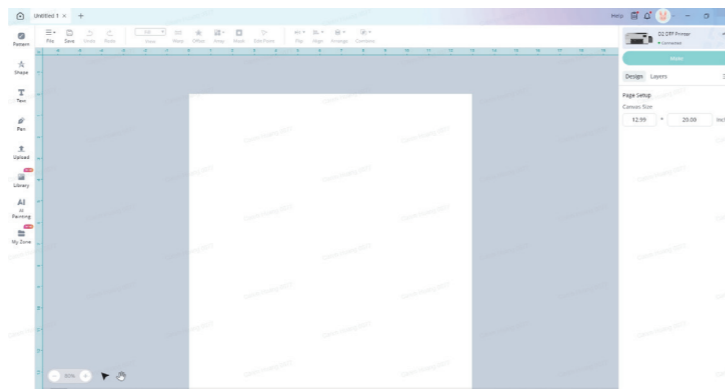
04

Software Interface Overview

1. Home: The Home page includes the following main sections: "Workshop", "Library", "My Zone", "Go to HTVRONT", "Community". For detailed guidance, click "Help" to access tutorial videos and the user guide.



2. Design Workspace: This is the area for creating and editing designs. It provides commonly used tools and quick-access buttons: "Save", "Upload", "Align", "Arrange".



05

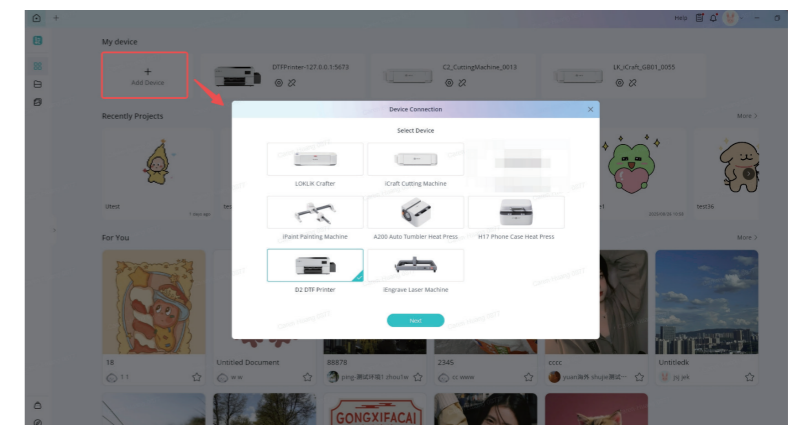
Machine Connection

Go to the Home page and click "Add Device".

Select "HTVRONT D2 DTF Printer" and follow the on-screen instructions to complete the connection.

On-screen Instruction:

1. Power on the printer.
2. Connect the printer to your computer using a USB cable.
3. Search for the device in the software and complete the connection.



First-time Connection Tips:

A device driver must be installed before the printer can be connected for the first time.

If the required driver is missing, the system will prompt you to install it during device search.

After the driver is successfully installed, search for the device again and reconnect.

If installation fails, try reinstalling the driver. If the issue persists, contact customer support at:

support@htvront.com

06

Set up the Printer

After the device is connected, click the

"Settings" icon as instructed in the follow-

ing picture.

1. General Settings

In the "General" tab, you can set:

Quick Ink Fill: When powering on for the first time or after Deep Clean, click Start to begin "Quick Ink Fill".

Print Direction: Set the print direction of the current task.

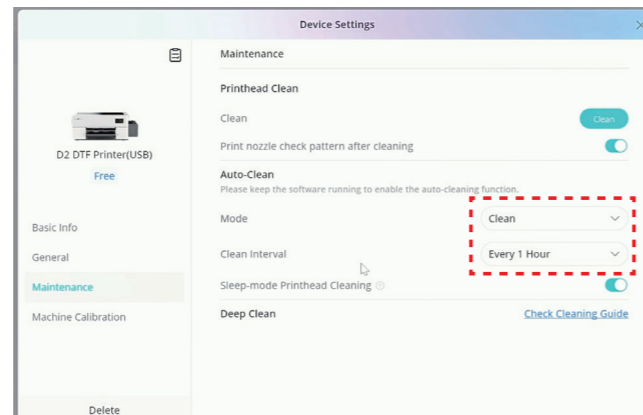
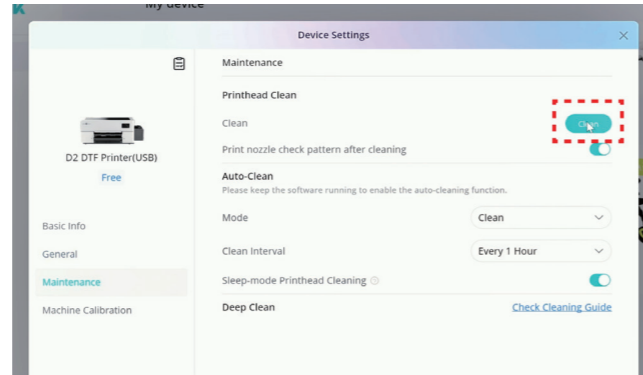
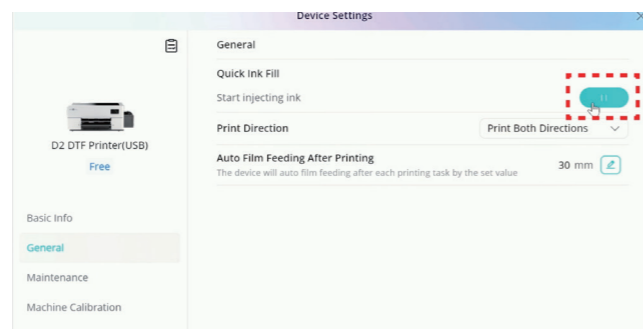
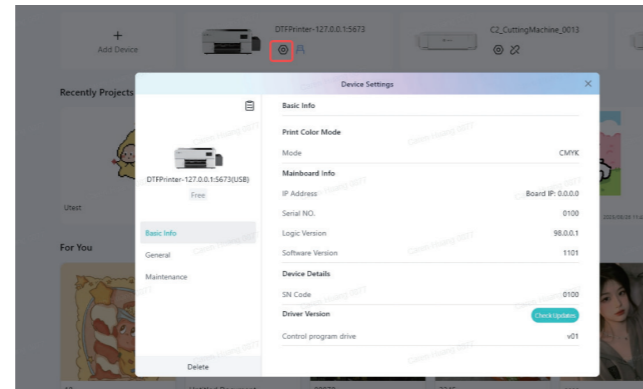
2. Printhead Maintenance

In the "Maintenance" tab, you can set:

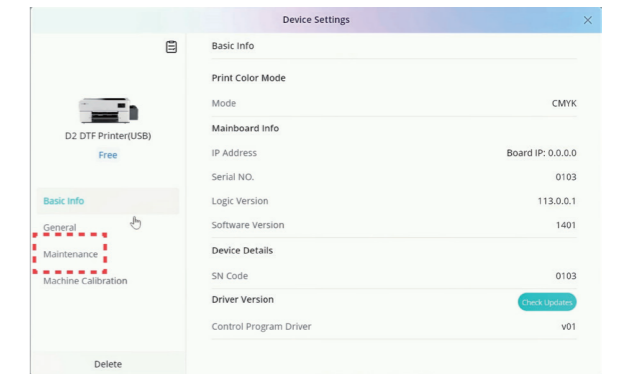
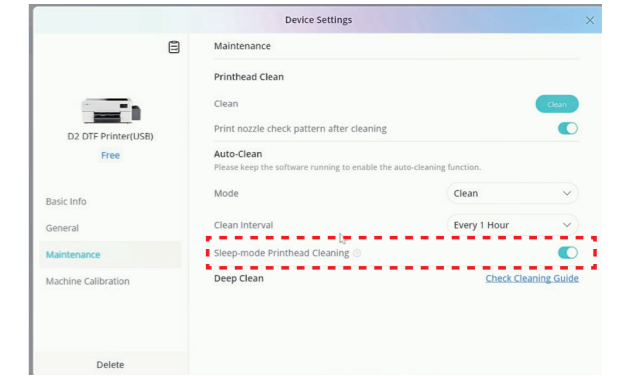
- **Printhead Clean:** Used to resolve minor printing issues caused by slightly dried ink or air bubbles, such as thin white lines, partial color loss, or minor line breaks. If these problems appear after printing a test, click "Clean" to perform printhead cleaning.

- **Auto-Clean:** Used to set a schedule and cleaning mode, so the printer can automatically perform cleaning at the set time. This is suitable for automatic maintenance outside working hours (such as at night or weekends) to prevent printhead clogging caused by long periods of inactivity.

Note: This function requires the computer to remain powered on and the screen to stay active.



- **Sleep-mode Printhead Clean:** For the first-time connection, this function must be enabled. Otherwise, the automatic printhead cleaning function in sleep mode cannot be executed. After enabling, set the cleaning duration and interval through the Printhead Clean control panel on the side of the machine.



3. Machine Info

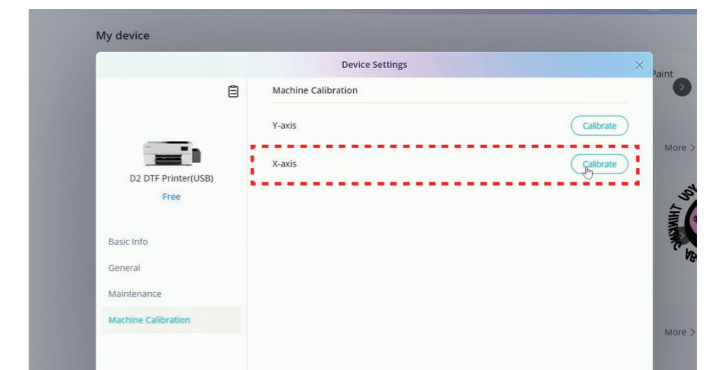
In the "Device Info" tab, you can view the following information:

1. Print Color Mode: CMYK
2. Mainboard Info: Displays the IP address, serial number, and logic version number.
3. Device Details: Displays the printer's SN code.
4. Driver Version: Displays the driver version. You can click "Check for Updates" to update the driver to the latest version (if available).

4. Machine Calibration

In the Machine Calibration tab, you can perform:

1. X-axis: Used for X-axis offset calibration to adjust horizontal printing deviation.
2. Y-axis: Used for Y-axis offset calibration to adjust vertical printing deviation.

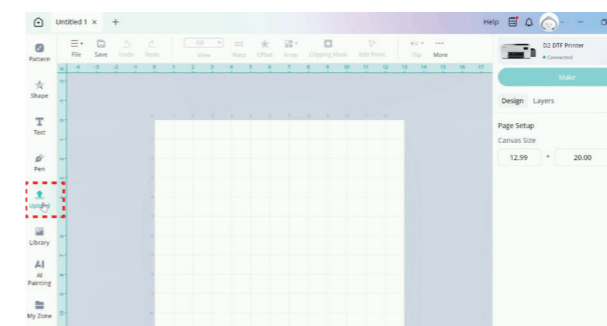


07

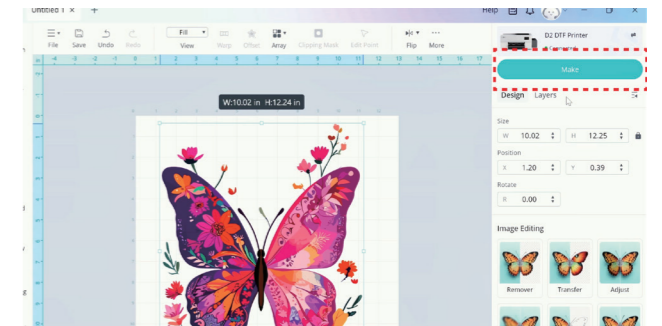
Printing Images

1. Create a New Task

Step 1: Import File: After creating a new canvas and setting the "Canvas Size", click "Upload" to import the image you want to print.

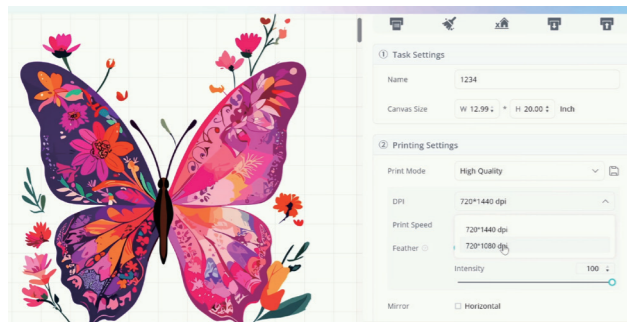


Step 2: Edit Image: Adjust the image size, crop, or make other edits on the canvas as needed. If no editing is required, click "Make" to set up printing parameters.

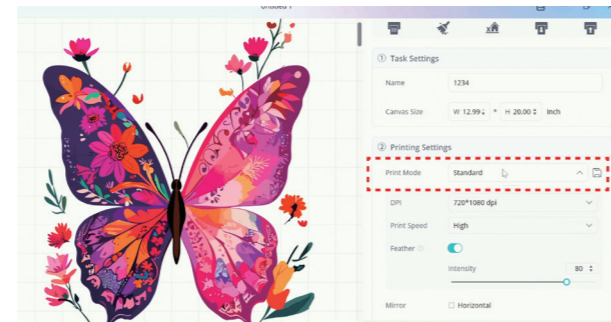


2. Printing Settings & Preview

a. Printing Settings: Set up "Print Mode", "DPI", "Copies", and "White Ink Fill" in the right side panel.

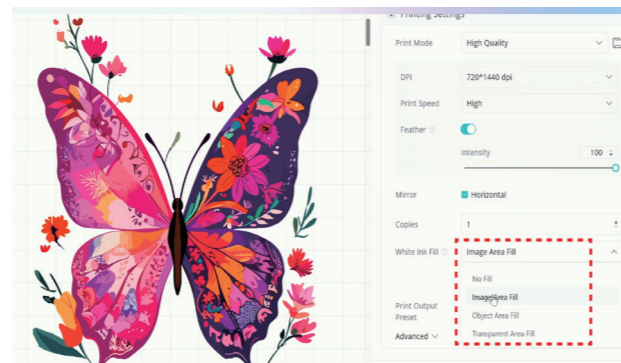


b. Print mode: A preset combination of printing parameters, including "DPI", "Speed", and "Feather" settings. The system provides two built-in print modes.

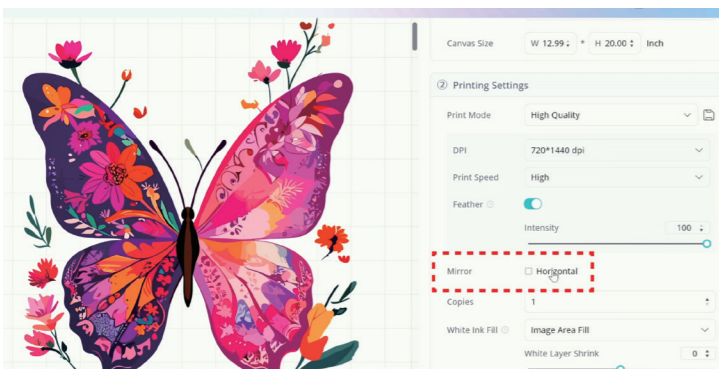


c. White Ink Fill:

- **Image Area Fill:** Covers the entire image area (including background) with white ink.
- **Object Area Fill:** Covers only the colored areas of the image with white ink.
- **No Fill:** Prints color only without white ink coverage. Note: Without white ink, the transfer may not be visible on dark fabrics.
- **Transparent Area Fill:** Covers transparent areas of the image with white ink.

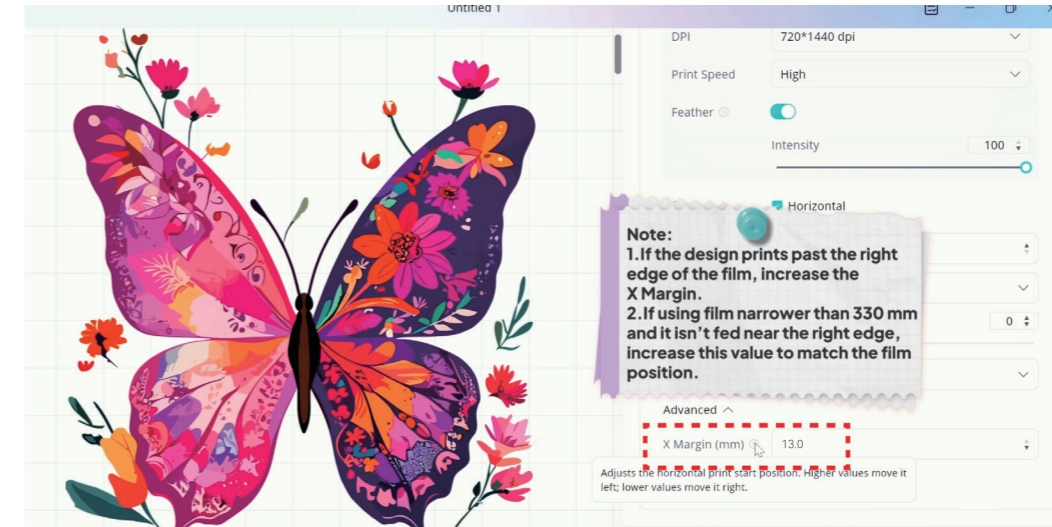


d. Mirror: Supports horizontal mirroring of the image.

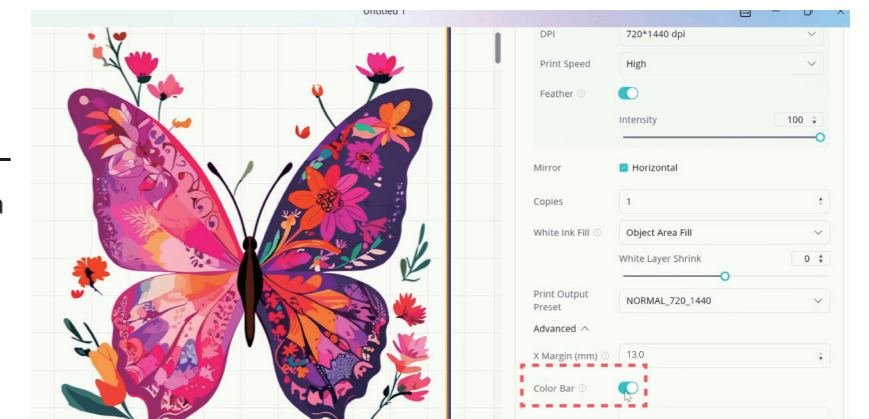


e. Print Output Reset: Different print output presets affect the color performance of the printed image. The system will automatically match the corresponding print output preset based on the selected DPI.

f. X Margin: Refers to the distance between the print starting position and the printhead origin. A larger value moves the starting position further left; a smaller value moves it right. The default value is set before shipment and normally does not require adjustment. If the image prints beyond the film on the right side, increase this value. If using film narrower than 330 mm and not feeding close to the right edge, increase this parameter to match the film position.



g. Color Bar: When enabled, a color bar will be printed on both sides of the image. If certain ink colors are not used for an extended period, this function can print a full-color strip to keep all ink channels active and prevent clogging.



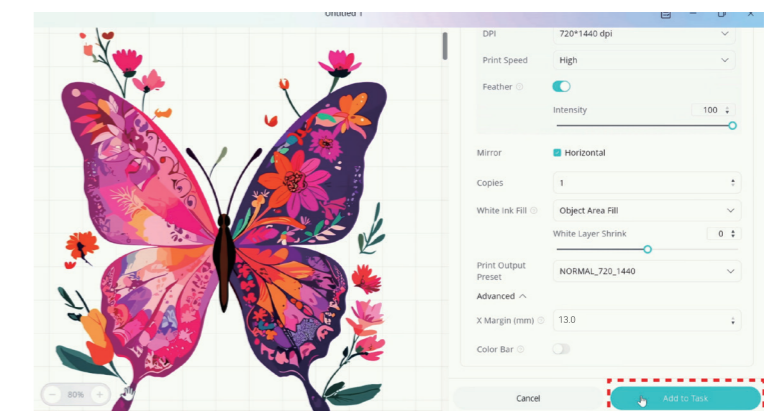
3. CMYK Preview

Click "CMYK Preview" in the preview panel to check the print result.

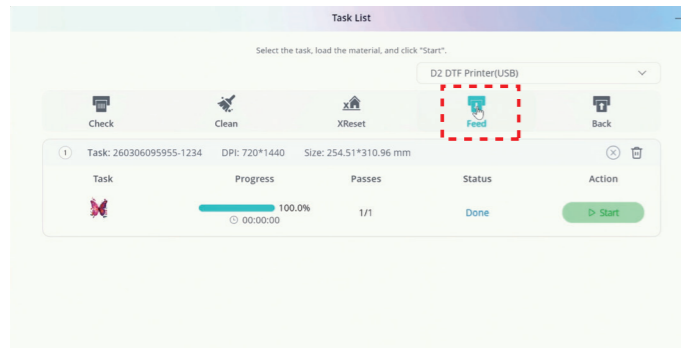
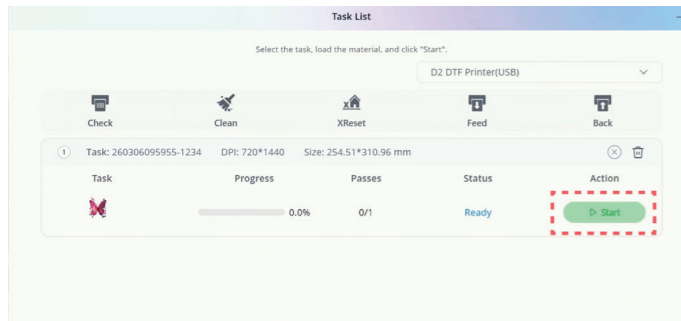
Note: Color shifts may occur when converting RGB to CMYK due to differences in color models.

4. Add Task

After completing all settings, click "Add" to add the task.



5. Printing Output



• **Start Printing:** Click "Start" for the selected task to begin printing. After printing is completed, remove the film from the printer.

• **Task Panel:** In the task list panel, you can view the image and task progress. The panel also supports "Feed", "Back", and "Clean" operations.

DTF Powder Shaking Instructions

Step 1: Prepare a sealed plastic container ($\geq 40 \times 40 \times 10$ cm / $16 \times 16 \times 4$ in). Pour the DTF powder into the container.



Step 3: Evenly distribute the DTF powder over the film and gently shake to ensure full coverage.

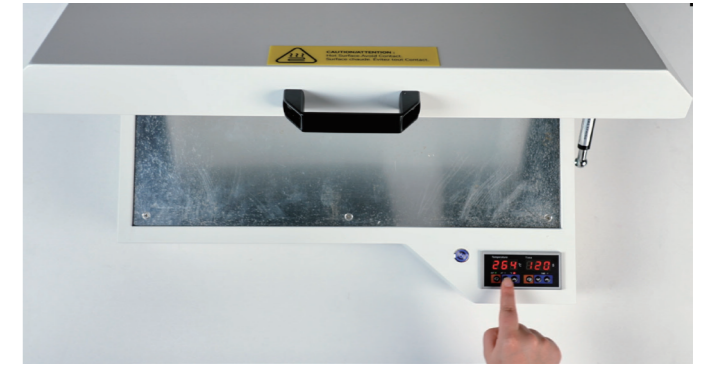


Step 2: After printing, place the film flat and air dry the extra moisture for optimal performance. Preheat the oven and set the required temperature and time. Recommend setting: $130^{\circ}\text{C} \pm 10^{\circ}\text{C} / 266^{\circ}\text{F} \pm 32^{\circ}\text{F}$, 120 S.

Step 4: Lightly tap the back of the film to remove the excess powder.



Step 5: Place the film flat in the oven with the printed side facing up. (Note: Avoid contact or friction on the design during handling.)



Step 6: Wear heat-resistant gloves and remove the cured film. Wait for it to cool before heat pressing or storage.



Deep-cleaning Instruction

When the printer will be stored for an extended period or prepared for shipment, perform a deep cleaning of the entire ink supply system and printhead according to the following steps to prevent ink clogging and ensure normal operation after long-term inactivity.

Step 1: Prepare the following tools:

- Deep clean tube
- Paper or towel
- ≥ 300 ml cleaning solution
- ≥ 300 ml container (for cleaning solution)
- ≥ 500 ml container (for waste ink)
- Work cloth
- Gloves

Note: Please perform deep cleaning in a clean working area to prevent ink contamination during the cleaning process.

Step 2: Waste Ink Tube Arrangement

Empty the waste ink tank, remove the waste ink tube, place it into a new container of at least 500 ml capacity, and secure it properly to prevent splashing during ink discharge.

Step 3: CMYKW Ink Tube Arrangement

Set the white ink circulation speed to 0 via the white ink speed knob, remove the CMYKW ink tubes from the ink bottles, and wipe them clean with a cloth or paper towel.

Step 4: Drain Ink

Open the IdeaStudio and connect the device, go to "Settings" and click "Quick Ink Fill," and observe the waste ink discharge; repeat 2–3 times until no more ink is discharged.

Step 5: Inject Cleaning Solution to Clean the Color Ink Lines

5.1 Match the white ink "in" and "Out" labeled tubes of the deep cleaning tubes with the tool's "In" and "Out" and connect them together according to color.

5.2 Insert the four remaining CMYK tubes into the rest of the deep cleaning tubes one by one.

5.3 Insert the other end of the cleaning tool tube into at least 300 ml of cleaning solution or directly into the cleaning solution bottle.

5.4 Clamp the white ink tube and open the CMYK tube clamps as instructed.

5.5 In IdeaStudio, click "Quick Ink Fill" to inject cleaning solution into the color ink lines, and repeat this operation 3 or 4 times. Then close the CMYK tube clamps.

Step 6: Inject Cleaning Solution to Clean the White Ink Line

6.1 Open the white ink tube clamp and set the white ink circulation speed to medium.

6.2 Observe the white ink flow in the cleaning tube and wait approximately 30–50 seconds until it reaches the red mark, then close the clamp.

6.3 Click "Quick Ink Fill" in IdeaStudio to inject cleaning solution into the white ink line.

6.4 Until the ink fill process stops automatically, open the white ink clamp again.

6.5 Repeat steps from 6.1 to 6.4 2 or 3 times.

6.6 After completion, set the white ink circulation speed to "Min" and disconnect the tubes from the cleaning tube.

6.7 Drain any remaining ink from the CMYKW ink bottles and reconnect the tubes.

6.8 After the printhead returns to its home position, power off the machine and install the printhead fixed plates back.

Specifications

Product Name	D2 DTF Printer
Model	FPB02
Dimensions	29.2 x 21.7 x 11.7 inch/74.2 x 55.1 x 29.6 cm
Weight	66.1 lb / 30 kg
Max Print Width	13 in/33 cm
Max Film Thickness	0.02 inch/0.05 cm
Ink Bottle & Waste Ink Bottle Capacity	300 ml
DPI	720*1080 dpi / 720*1440 dpi
Min Ink Drop Size	4.5 pl
Max Print Speed	1.5m ² /h; 16 ft ² /h
Film Compatibility	Roll
Color Channels	KCMY+WW
Printhead	F1080-A1(XP600)
Print Type	Inkjet Printing
Supported OS	Windows 10 and above; Mac OS is not supported
Operating Temp & Humidity	15-30°C/59-89°F 30%-80% RH
Power Input	110-220V~ 50/60Hz
Rated Power	350W

Q1: Why can't the software detect the printer during connection?

A1: If the IdeaStudio prompts to check the USB connection or power status, confirm that the USB cable is properly connected and the printer is powered on.

A2: If the IdeaStudio prompts that the driver is missing, click "Install Driver," complete the installation, and reconnect the printer.

Q2: What operating systems are supported?

A1: The HTVRONT D2 DTF printer supports Windows systems only. Windows 10 or later is required.

Q3: How to install or update the driver?

A1: If installing the driver for the first time, follow the installation prompt and reconnect the printer after installation is completed. If it failed to install, please try again. If the issue still exists, please contact the HTVRONT customer support for help.

A2: To update the driver, go to "Device Settings", click "Check for Updates" and install the new version if available.

Q4: How to choose the correct "White Ink Fill" mode?

IdeaStudio provides multiple white base options to accommodate different production needs. For most applications, "Image Area Fill" is recommended.

- Image Area Fill: Covers the entire image area (including background) with white ink.
- Object Area Fill: Covers only the colored areas of the image with white ink.
- No Fill: Prints color only without white ink coverage. Note: Without white ink, heat transfer cannot be completed after applying DTF powder.
- Transparent Area Fill: Covers transparent areas of the image with white ink.

Q5: What to do if you fail to upload an image to the IdeaStudio?

A1: Ensure that the computer has sufficient memory and close other applications to free up system resources.

A2: Verify that the image format is supported by the software.

Q6: What does the Deep Cleaning Tube do?

A1: When the printer will be stored for a long period or prepared for shipment, the Deep Cleaning Tool removes ink from the printhead and ink tube system to prevent clogging; for detailed instructions, refer to "Section 7 Deep Cleaning Instructions" or the tutorial video.

Q7: Why does the film shift and trigger a printhead collision alarm after printing for a while?

A1: Check whether the rear film assembly is properly installed with all screws tightened.

A2: If the film cannot stay aligned or appears raised, adjust the screws on the plastic holders to correct the tension and keep the film parallel to the guideline.

Q8: What to do if the white ink is too light to cover the colored area?

A1: Clean the printhead twice and print a nozzle check to inspect the white ink nozzles, and contact customer support if the clogging is severe.

A2: If the clogging is minor, adjust the white feathering intensity, as higher values increase density up to a maximum of 100, but may cause ink buildup, flowing, and slower printing, and the optimal result is even coverage with slight thickness and no visible transparency.

A3: If the issue remains, ensure the recently added white ink was fully shaken without sediment, and replace it with qualified ink if necessary.

A4: If the problem persists, contact the HTVRONT customer support for assistance.

Q9: Why is there white adhesive overflow at the edges after heat pressing?

A1: Adjust the "White Layer Shrink" value in the IdeaStudio and start with -0.5 mm for testing, where negative values reduce the white layer proportionally and positive values enlarge it, and the value represents the distance between the white outline and the color edge.

A2: Reduce the amount of DTF powder during application to prevent overflow caused by excessive thickness, or switch to another powder type if necessary.

A3: Check the heat press pressure, temperature, and time settings, and slightly reduce the pressure while ensuring proper adhesion.

Q10: Why is the printing speed slow or the printing process interrupted?

A1: Check whether the computer USB port is functioning properly, try another port, and ensure it is connected to a USB 3.0 port.

A2: Make sure the computer is not running resource-intensive tasks such as file transfers or large applications before printing.

A3: If the speed remains unsatisfactory, adjust the printing "DPI", "Feather", and "Speed" settings, as higher quality settings result in slower printing.

Q11: Why does the printed color differ from the original image?

A1: Color differences may occur because display results vary between different screens and devices.

A2: Clean the printhead one to two times and print a nozzle check pattern to inspect all color nozzles, and contact customer support if severe clogging is found.

Q12: Why are there jagged edges on the printed design?

A1: Jagged edges may appear if the image resolution is low or excessively enlarged, and reducing the image size may improve the result.

A2: Use "Photoshop" or other image editing software to soften the image edges.

Q13: What should I do if a printhead collision occurs?

A1: When a collision alert appears, cancel the current print job to return the printhead to its position, remove the damaged film, reload properly, and then restart the print task.

Q14: What should I do if there are air bubbles in the ink tubes?

A1: If small air bubbles appear in the ink tubes but the nozzle check pattern prints normally, no action is required. In most cases, printing several test images will help stabilize ink flow.

A2: If the white ink channel does not appear in the nozzle check pattern, clogging is likely. Perform a forced ink fill, then clean the printhead and print several test images. Repeat if necessary.

A3: If certain colors fail to print due to air bubbles in the ink tubes, use a syringe to remove the air from the affected ink tube. Make sure the ink sac is properly positioned and the ink path is sealed so ink can flow smoothly.

A4: If ink cannot be primed because of air in the ink path:

- Check the ink tubes, ink sacs, and ink stack.
- Try drawing warm water through the system with a syringe.
- If strong resistance is felt, the waste ink pump may be clogged and should be cleaned or replaced.
- If there is little resistance but no liquid enters the syringe, the printhead and ink stack may not be sealing properly.

A5: If the air bubbles are caused by a leaking ink damper, remove the damper and test it by injecting air or clean water with a syringe. If leakage is detected, replace the ink sac.

Q15: What should I do if the printhead suddenly stops moving properly?

A1: Close the software, turn off the printer, then restart the printer and try again.

A2: Check whether the optical encoder strip behind the printhead is out of position. If necessary, gently adjust it back using a lint-free cloth.

A3: Check whether the collision sensors on both sides of the printhead are bent or misaligned. If so, gently adjust them back to their normal position.

Precautions

1. Please use HTVRONT-branded DTF ink and do not disassemble or repair the printer yourself. Unauthorized disassembly and repair, or the use of non-original ink, will void the warranty.
2. Unauthorized disassembly or repair will void the warranty.
3. Do not touch the printhead or any internal components.
4. Please dispose of waste ink, DTF powder, DTF transfer film, and other waste materials in accordance with local environmental regulations.
5. Keep the printer and all consumables out of the reach of children.
6. Place the printer on a stable, level surface. Please leave sufficient space around the printer for proper operation and ventilation.
7. Use a dedicated power outlet with proper grounding.
8. Please cut the power off before moving, maintaining, or cleaning the printer.
9. Do not operate the printer with wet hands. Keep the printer away from liquids and avoid any contact with moisture.
10. Close the lid after use to prevent dust from entering.
11. Keep away from moving parts while the printer is in operation to avoid injury.
12. Return the film cutter to the left side position after cutting to ensure proper film feeding and protect the printhead.
13. Wear protective gloves and a mask during the operation.
14. Clean the working area regularly to prevent the DTF powder buildup.
15. Please use the CMYK PNG images for the best printing result. RGB images may result in color deviation.

Operation Guidelines

• Operation Environment

1. Operate and store the printer and consumables in an environment with a temperature of 59 – 86°F (15 – 30°C) and a relative humidity of 40 – 60%. Keep the printer away from damp or dusty environments.
2. Store the printer and consumables in a cool and shaded place.
3. Please perform powder application and film baking in a well-ventilated area.

• Standard Operations

1. When powering off, close the IdeaStudio first, then turn off the printer. When powering on, turn on the printer first, then open the software and connect the device.
2. After cleaning the printhead, always print a nozzle check pattern first and make sure the pattern is normal before printing.
3. After printing, empty the waste ink bottle and clean any residual ink around the printhead and the ink pad with the cleaner ink.
4. Do not power the machine on and off frequently within a short period of time.

Daily Maintenance

1. Clean the printer and internal components regularly to prevent contamination from affecting print quality.
2. Check the ink sac and white ink buffer regularly for any ink leakage or clogging.
3. Please check the waste ink tank regularly. Ink foam may cause the tank to overflow before the warning is triggered.
4. The IdeaStudio supports Windows 10 or later only. Please visit the software download page regularly and update the software to the latest version for stable printing performance.
5. Clean the printer regularly to maintain consistent print accuracy and extend its lifespan. Recommended cleaning areas and procedures are as follows:

- Ink Pad: Use a lint-free (non-woven) cloth dampened with 75% isopropyl alcohol or approved cleaning solution to wipe around the ink pad and the metal base beneath it. Remove any accumulated waste ink thoroughly.
- Wiper Blade (Ink Scraper): Gently wipe the surface of the wiper blade with a lint-free cloth dampened with 75% isopropyl alcohol or cleaning solution until clean.
- Optical Linear Encoder Strip: Lightly wipe the strip in a single direction using a lint-free cloth dampened with 75% isopropyl alcohol. Do not scrub or wipe back and forth. Allow it to dry completely before operating the printer.
- Film Tray & Pressure Roller: Lift the pressure roller and remove the film from the printer. Using two separate lint-free cloths dampened with 75% isopropyl alcohol or cleaning solution, clean the tray surface and the roller individually. Reinstall the film after cleaning is complete.

Note: Wear protective gloves during cleaning. Only use 75% isopropyl alcohol or the specified cleaning solution. The use of other chemicals may damage internal components.

Notes

1. Red cleaning fluid (cleaner ink) may remain inside the printer due to factory testing. This is normal and does not affect print performance.
2. Shake ink bottles thoroughly before use. Unopened ink is recommended to be used within one year.
3. When powering on, turn on the printer first, then launch the software and establish the connection. When powering off, close the software first, then turn off the printer.

HTVRONT D2 DTF Printer Limited Warranty

This product is covered by a one-year warranty from the date of purchase. If a defect occurs under normal use within the warranty period, we will provide warranty service. Proof of purchase is required to claim warranty service. HTVRONT accessories are covered by a free warranty for three months from the date of purchase. In the event that any warranty terms conflict with applicable local laws and regulations, the local laws will take precedence.

To the extent permitted by applicable laws, HTVRONT is not responsible for the warranty in the following situations: malfunctions caused by improper use, maintenance, and storage by consumers; malfunctions caused by self-repair or dismantling by those who do not undertake the three-guarantee repair without the permission of our company; products that can continue to be used after repair when the warranty expired; damage caused by force majeure. Meanwhile, HTVRONT disclaims all implied and legal warranties, including warranties of merchantability and fitness for a particular purpose. The warranties that are allowed to be denied are for the duration of this warranty.

Proof of purchase may be required to verify warranty eligibility.